



KENYA RURAL ROADS AUTHORITY

TENDER NOTICE

ADDENDUM NO. 1

TENDER FOR INSTALLATION, INTEGRATION, MANAGEMENT AND OPERATION OF VIRTUAL WEIGHBRIDGE STATIONS

TENDER NO. KeRRA/08/39/81/2023 - 2024

Reference is made to the Tender Notice that appeared in the Authority's website on 19th March, 2024.

1. The Authority has received various requests for clarification and interested bidders are requested to note as detailed in the table below;

S/N	Clarification Sort	Clarification Given
1.	<p>Pages 119 – 129 BOQ</p> <p>We have noticed for Appendix B Part I for Sub-total A to go to BOQ Item 5.2 in the RFP has a Total of KES 24,143,000.00. Our tabulation of the Items listed in the RFP for Appendix B Part I is coming to a Total of KES 24,940,300.00.</p> <p>1. Kindly clarify which amount is correct and which of the two amounts should be put as Sub-Total A for Appendix B Part I?</p> <p>2. As this may or may not affect, the total PC Sum for BOQ Item 5.2; kindly also clarify the amount to put under GRAND TOTAL CARRIED FORWARD TO ACTIVITY 5.2; should it be KES 32,099,000.00 as it currently is on page 129 or KES 32,896,300.00 as our tabulation above implies?</p>	<ul style="list-style-type: none"> Appendix B Part 1 for subtotal A, the total given in KES 24,143,000. The correct figure should be KES 24,940,300.00 The PC sum for BOQ item 2 changes so the GRAND TOTAL CARRIED TO ACTIVITY FOR 5.2 will change to KES 32,896,300 as correctly put by the tenderer.
2	<ul style="list-style-type: none"> Clarification: At Ngong-Suswa station, there is no KPLC power connection line nearby, and the option is to install a transformer or substation, which is extremely costly. Do we still proceed with the cost for a transformer, or do we leave this station out of this bill? Can we propose alternative power solutions like solar, and if yes, what would be the specifications so that all bidders are on the same page on what to cost? 	<ul style="list-style-type: none"> Please exclude Ngong - Suswa from the grid power connection and provide costing for a solar solution that can adequately power the station. (At least 20 KVA) The grid power connection requirements for the rest of 3 stations have not changed and the bidder is required to provide costing for connecting to the grid power supply.

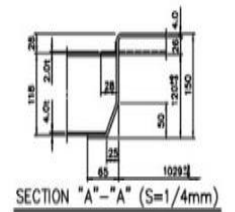
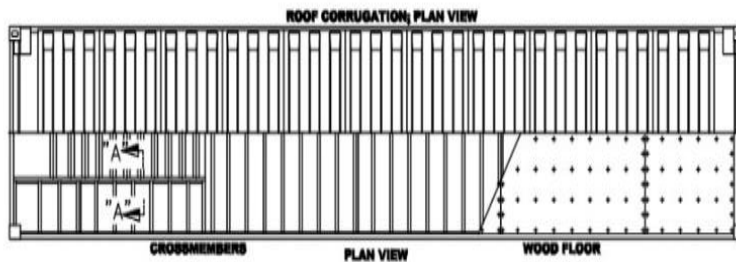
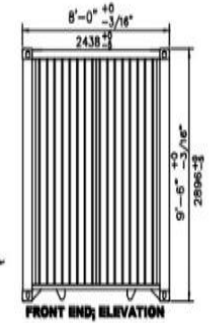
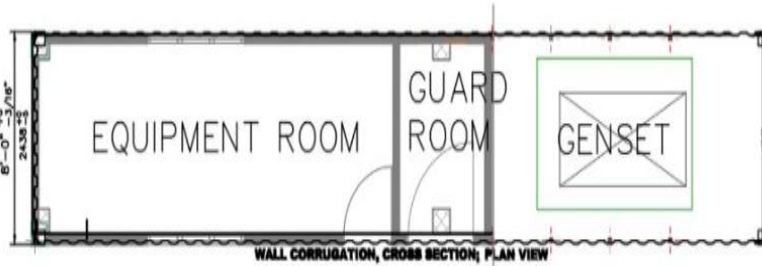
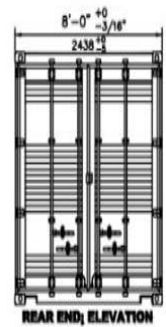
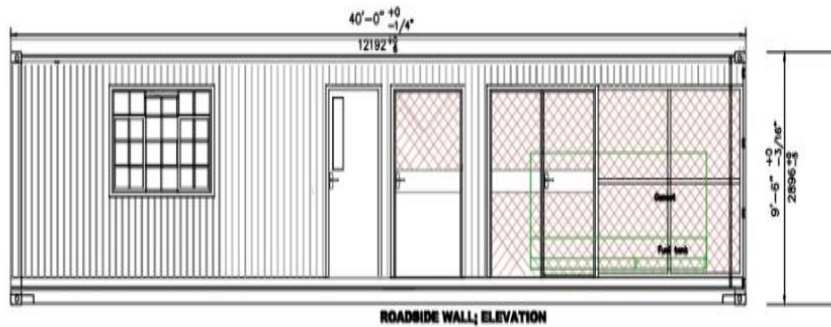
	<ul style="list-style-type: none"> • Container Specifications: We kindly request clarification on the specific container specifications required for the project. It is essential for us to accurately understand and adhere to the container requirements to ensure the successful execution of the project. • Long Tender Number vs. RFP Number: Could you please confirm whether the long tender number or the RFP number should be used for reference purposes? Ensuring the correct reference number is used is crucial for accurate documentation and compliance. • Generator Tank Capacity: There appears to be a discrepancy regarding the tank capacity specified for the generator. We kindly request clarification on the accurate tank capacity required to ensure that the generator meets the project's power supply needs effectively. <ul style="list-style-type: none"> • 20KVA genset with 1000ltrs on bill 2 page 101 while the specifications on page 169 point to 50ltrs tank capacity. • Data Center Space: To proceed with the planning and implementation of the data center infrastructure, we kindly request clarification on the exact square footage requirement for the data center space as per the tender specifications. • IP-based Biometric Access Control: We have noted that the quantity specified for the IP-based biometric access control systems may not align with the number of sites mentioned in the tender documentation. Could you please clarify whether additional systems are required for the remaining sites? Bill 2, item 2.3 • Fiber Access Cable: Regarding the fiber access cable requirement, we understand that there may be limitations on terminating the cable at the stations due to backbone infrastructure restrictions. We kindly request guidance on how to proceed in light of this constraint to ensure connectivity requirements are met effectively. 	<ul style="list-style-type: none"> • Please find specifications and sketch of the containers attached herewith as Annex 1. • The Tender Number for this Tender is KeRRA/08/39/81/2023 – 2024. • Amend the tank capacity to 1,000 litres. Disregard the 50 litres capacity and amend to 1000 litres • The Data Centre space to be partitioned is 284 sq. metres • Information provided in the tender document is correct • Please provide wireless connection for both primary and secondary internet links, each with capacity of 50 Mbps. The primary and secondary links shall be from different providers if there is no fibre optic access.
3	Request for Extension of Tender Opening Date to 26 th May, 2024 for Tender No.: KeRRA/08/37/03/2023-2024	<ul style="list-style-type: none"> • The submission date is hereby revised from 18th April, 2024 to 25th April, 2024 at 11.00 a.m.
4	Request to subcontract a manufacturer with required specific experience as per the mandatory preliminary requirements	<ul style="list-style-type: none"> • To remain as per the requirements of the tender document.

2. Full details of the Clarification Response is available and can be downloaded from the Authority's website **www.kerra.go.ke** and or **www.tenders.go.ke**.
3. Bids not received at the submission venue by the closing time will not be accepted for opening and will be rejected and returned unopened.
4. All other information remains the same.

Deputy Director (Supply Chain Management)
FOR: **DIRECTOR GENERAL**

ANNEX 1

40' STEEL DRY FREIGHT HIGH CUBE ISO CONTAINER



DOOR OPENING	WIDTH	2340 MM	7'-8 1/8"
	HEIGHT	2585 MM	8'-5 3/4"
INTERNAL	LENGTH	12033 MM	39'-5 11/16"
	WIDTH	2352 MM	7'-8 5/8"
	HEIGHT	2695 MM	8'-10 1/8"
GROSS WEIGHT		30480 KG	67200 LB
TARE WEIGHT		3880 KG	8560 LB
PAYLOAD WEIGHT		26600 KG	58640 LB
CUBIC CAPACITY		78.3 CU.M	2893 CU.FT